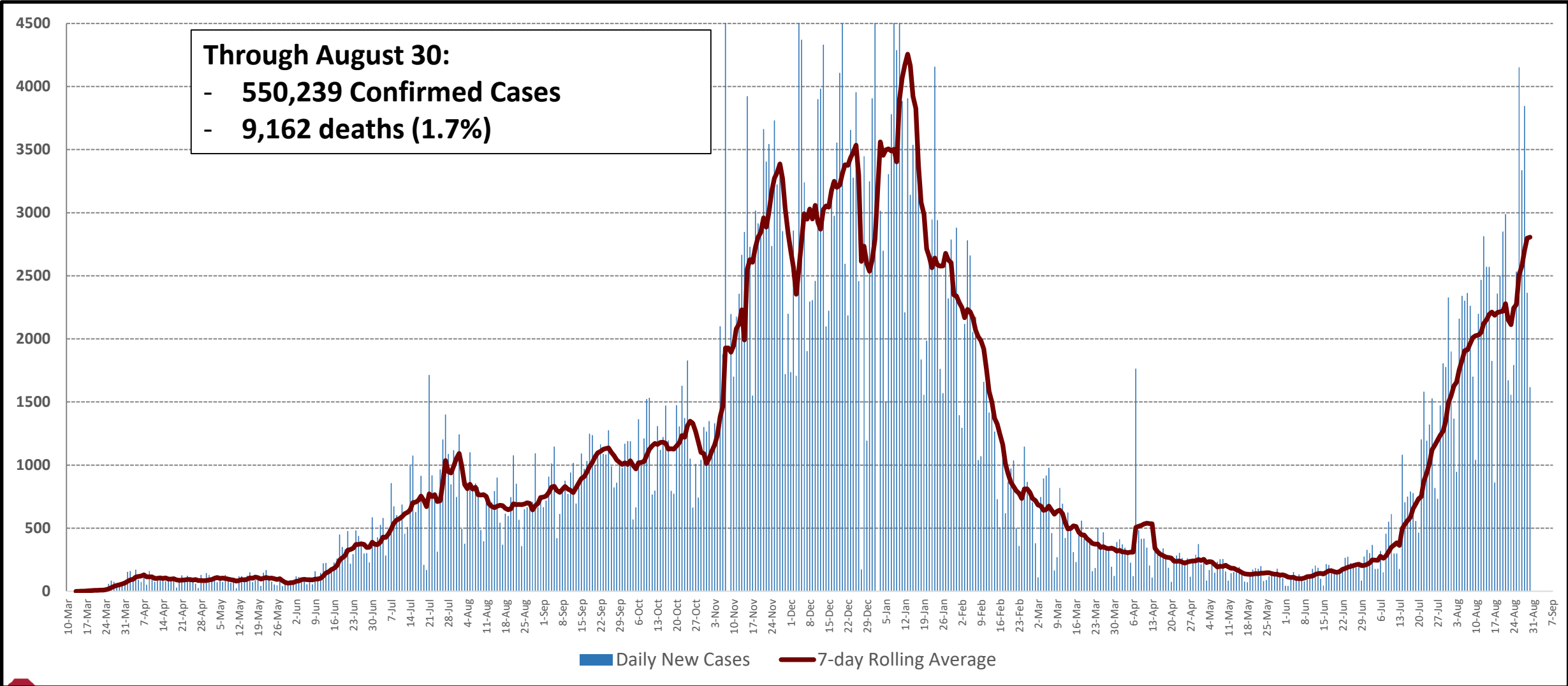


# Daily New Cases with 7-day Rolling Average

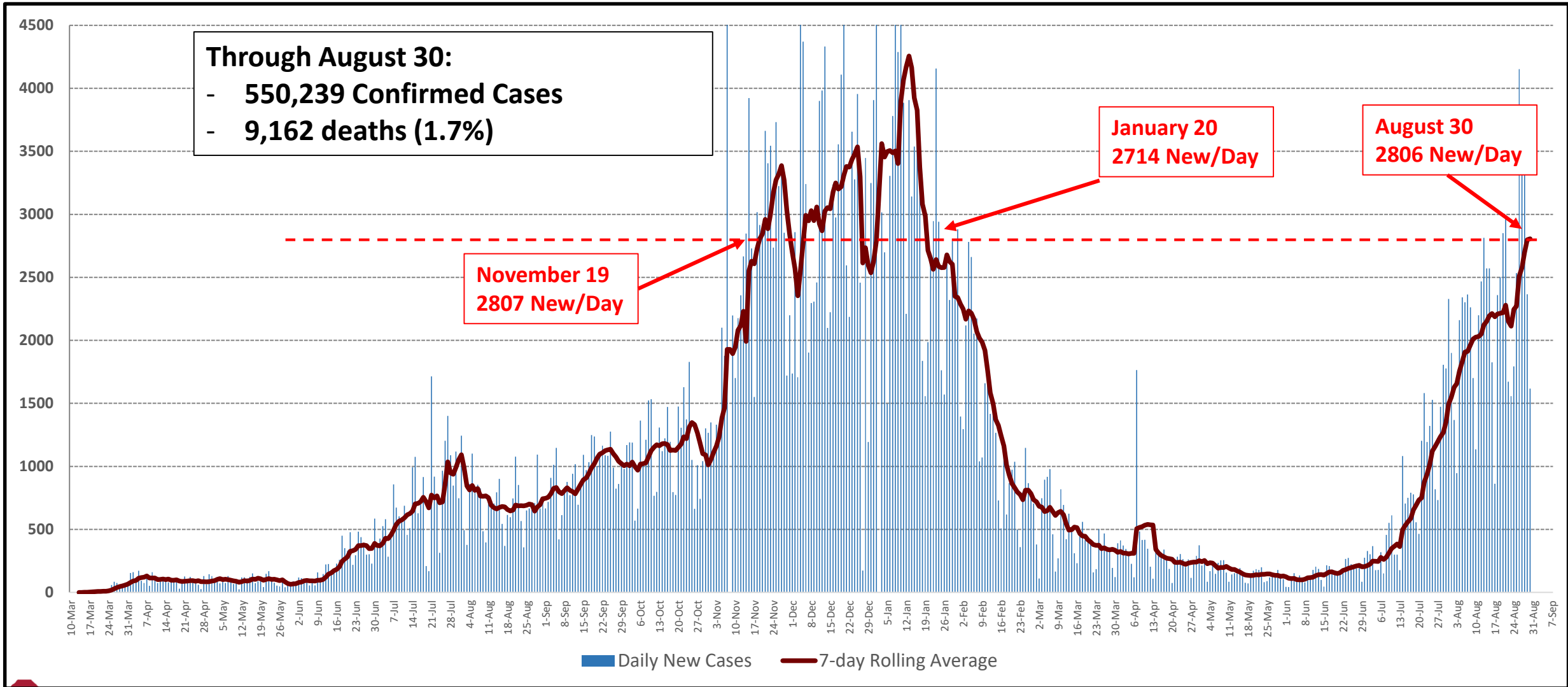
## Oklahoma

Through August 30:  
- 550,239 Confirmed Cases  
- 9,162 deaths (1.7%)



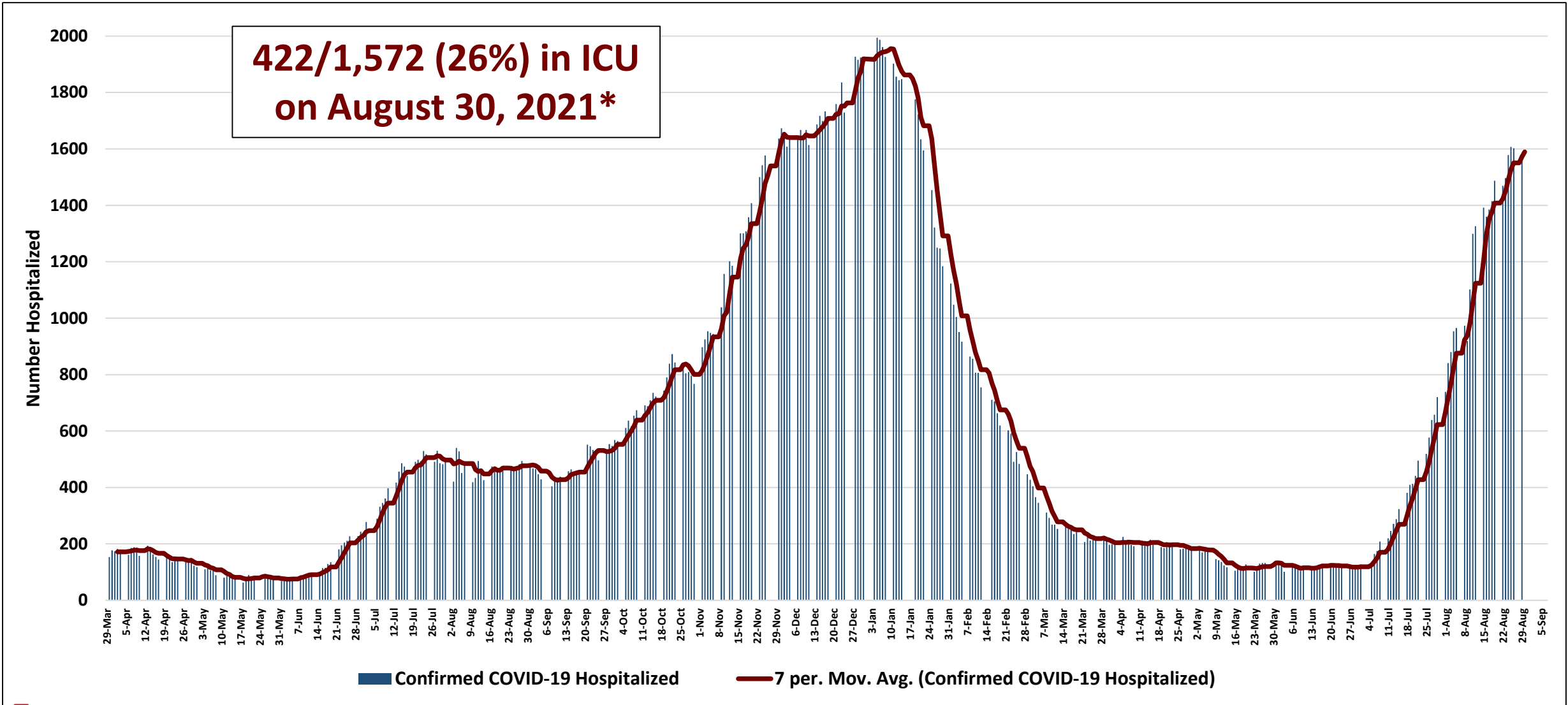
# Daily New Cases with 7-day Rolling Average

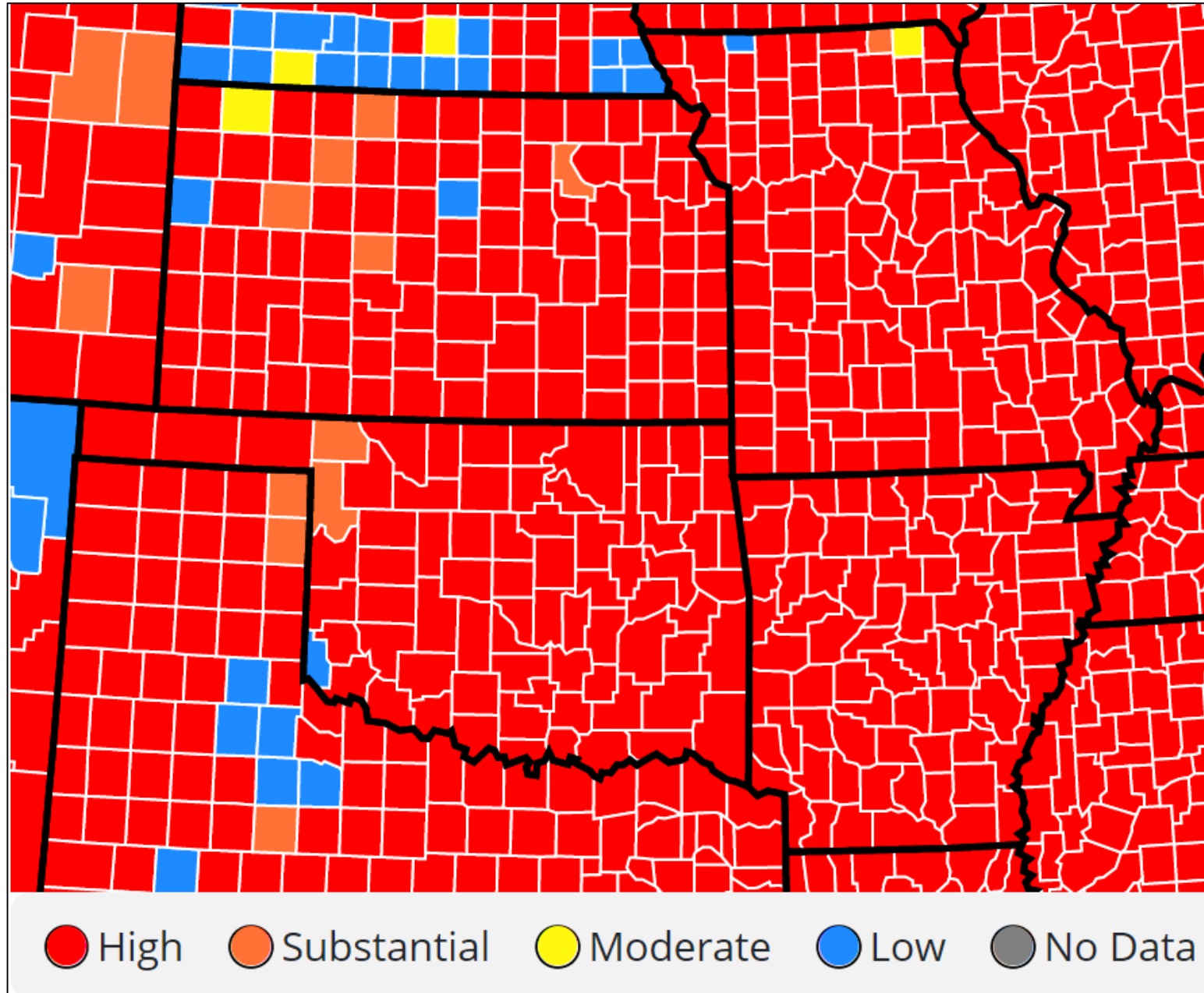
## Oklahoma



# Hospitalizations – Confirmed Cases

**422/1,572 (26%) in ICU  
on August 30, 2021\***





## Community Transmission Rate

Time Period:  
August 22, 2021 –  
August 28, 2021.

<https://covid.cdc.gov/covid-data-tracker/#county-view>

*RED -  $\geq 100$  new cases per 100,000 per week; or  $\geq 10\%$  rate of positive COVID tests in the past week.*

Data refreshed: August 30